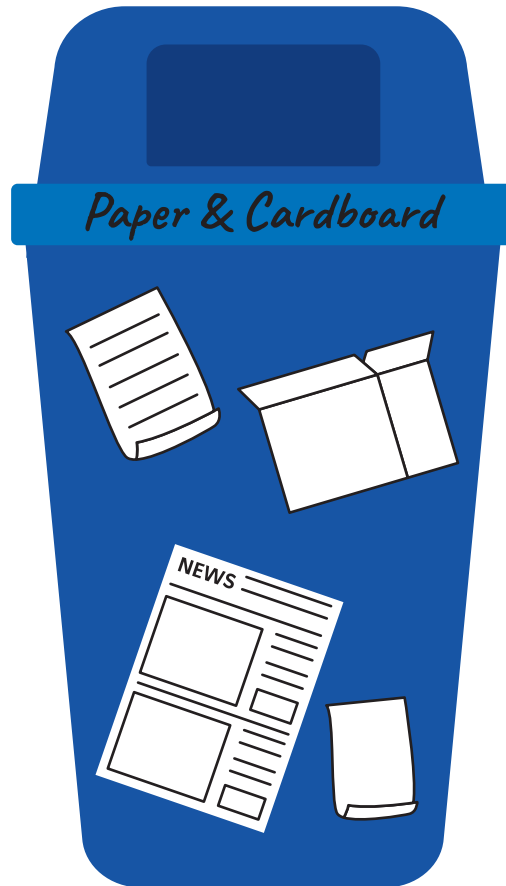
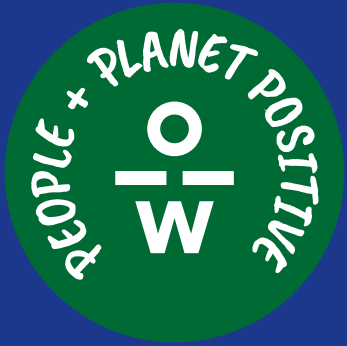


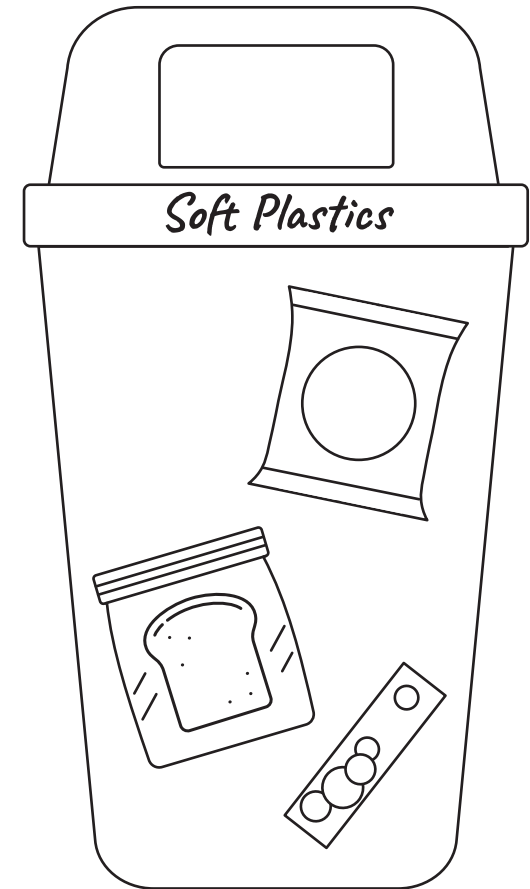
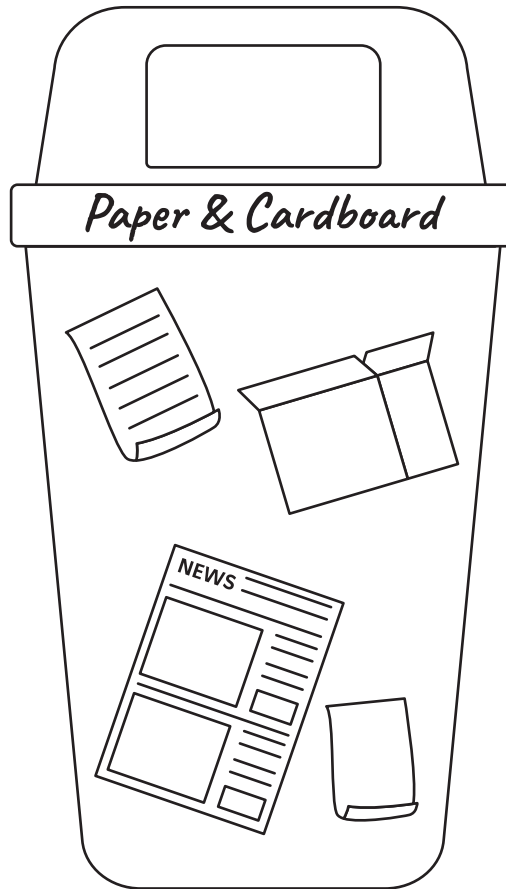


# Recycle Right. Colour Your Waste.





# Recycle Right. Colour Your Waste.





# Recycle Right



## Comingle / Kerbside Recycling

What can go in the bin ✓

- Paper, cardboard, junkmail
- Egg cartons
- Aluminium foil and cans
- Plastic water or drink bottles
- Plastic food packaging such as ice cream containers, yoghurt tubs

What can't go in the bin ✗

- Plastic bags or soft plastic film such as cling wrap
- Broken glass or plates
- Clothing
- Food scraps

## Recycling Tips

- Always remember to empty recycling into the bin loose, not in a bag.
- Containers should be rinsed and empty.



## Landfill / General Waste

What can go in the bin ✓

- Plastic straws
- Band-aids
- Disposable nappies
- Greasy or dirty food wrapping

What can't go in the bin ✗

- Batteries
- Cardboard
- Clean recyclable items such as bottles or containers

## Recycling Tips

- Remember to check if any items can be recycled. It's important no valuable resources go to waste.



## Soft Plastic

What can go in the bin ✓

- Chip packets, chocolate wrappers, confectionery bags
- Bubble wrap
- Bread bags
- Plastic carrier bags

What can't go in the bin ✗

- Hard plastic items such as biscuit trays, plastic bottles or containers
- Biodegradable or compostable plastic
- Foil

## Recycling Tips

- If you scrunch the plastic and it pops back into the same shape, it's a rigid plastic. If it stays scrunched up it's a soft plastic.



## Organics / Food

What can go in the bin ✓

- Fruit and vegetable scraps
- Ground coffee
- Napkins and tissues
- Shredded paper

What can't go in the bin ✗

- Plastic bags or plastic film such as cling wrap
- Compostable or biodegradable packaging
- Oil

## Recycling Tips

- Avoiding food waste is the best step to organics or food recycling. Make sure to eat all your food!



# Recycle Maze

Help the pen make its way to the Officeworks recycling bin, but be careful, don't let the pen end up in the wrong bins or landfill!



Start!



Landfill



Finish!



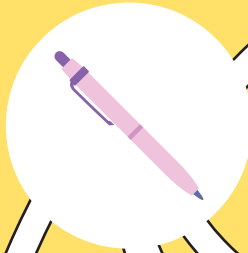


# Recycle Maze

Help the pen make its way to the Pen and Marker recycling box, but be careful, don't let the pen end up in the wrong bins or landfill!



Start!



Landfill



Finish!



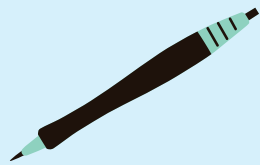


# Pen and Marker Recycle Program

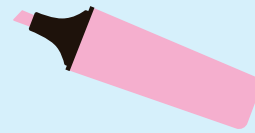
## What can go in the box



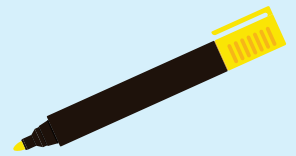
Pens



Felt tips



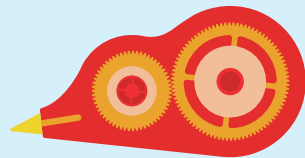
Highlighters



Markers



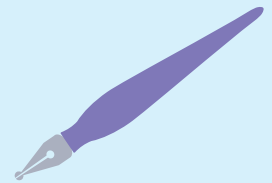
Mechanical pencils



Correction tape



Liquid Paper



Fountain pens /  
ink cartridges

## What can't go in the box



Glue sticks



Rubbers



Rulers



Pencils



Sharp objects