

# FACE CREATION



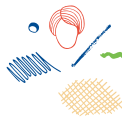
**Step 1:** Take a good look at the image you have been provided, taking note of facial features like the nose and eye shape, skin texture, eyebrow arch, lip shape and skin colour.



**Step 3:** Place the image you have folded on the blank space below and begin sketching the other half of the face.



**Step 2:** Now fold the image in half, perfectly down the centre of the face.



**Step 4:** Use different pencil colours, weights and techniques like sketching and smudging to portray the textures of the skin and shape of the features.

Take your time, have fun and be creative!

